

Lomart

Spectra 3

Sand Filter with 2 Position Valve

Model 314 — Item No. 1-1490-089

Owner's Guide



Did you read the **IMPORTANT SAFETY INSTRUCTIONS**? If not, **READ THEM NOW**. They contain very important safety information related to the installation of your filter. Familiarize yourself with the installation sequences by reading these instructions first. **AVOID SHORT-CUTS** that may result in reworking the installation.

BEFORE YOU BEGIN

The pool must be properly erected per your pool assembly and installation instructions before installing the filter. Install the surface skimmer and return fitting.

Before completing the filling of the pool to the water level indicator marks on the skimmer face plate, the filter and pump should be installed with all connections secured tightly.

TOOLS REQUIRED

- Flat head screwdriver
- Flat shovel
- Carpenter Level
- Tape Measure

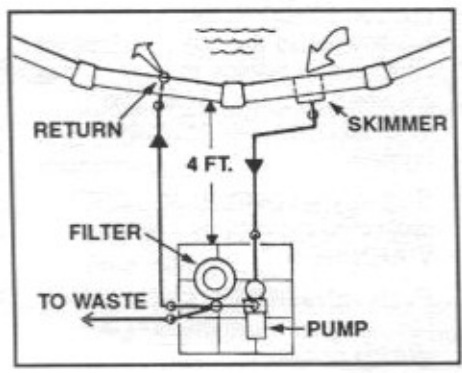
MATERIALS REQUIRED

- Nine 12" x 12" patio blocks
- Waste hose - 1-1/2" inside diameter
- 1-1/2" hose clamp
- Silicone lubricant (available at pool dealer)
- Ordinary plastic bag
- 100 lbs. of #20 grade filter sand

INSTALLATION

INSTALLATION LOCATION

Install your filter and pump and any other related components at least 4 feet from the pool to prevent their being used as a means of access to the pool by young children. Patio blocks provide firm support and keep standing water and weeds away from electrical parts. **DO NOT** install your filter and pump directly on the ground surface. Settling and stressing circulation lines may occur during wet seasons. Position patio blocks as illustrated, use a shovel and carpenter's level to level ground before placing the blocks.



POSITIONING FILTER/PUMP

Position filter and pump on pad as shown. Suction and return lines should be buried below the ground surface to prevent accidental tripping that may otherwise cause personal injury or damage to the circulation system. Using a shovel, scrape out 4" deep trenches from the pump suction to the underside of the skimmer and from the filter outlet to the return fitting.

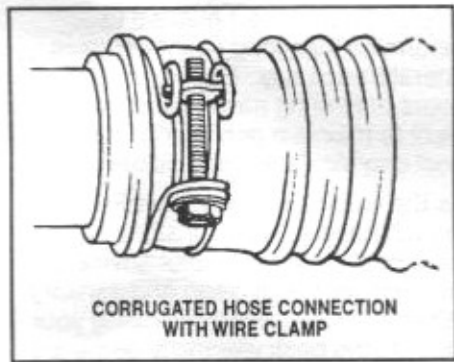
INSTALL HOSES

The two long hoses are used for suction and return lines.

Suction: From pump suction to bottom skimmer outlet.

Return: From bottom valve port to pool inlet fitting.

The short hose is connected between the pump discharge and the center right side of the filter valve. Slip a hose clamp over the ends of each hose prior to installing. Push hose ends onto connections fully, then tighten clamps firmly using a flathead screwdriver. Fill trenches with dirt when completed.



CORRUGATED HOSE CONNECTION WITH WIRE CLAMP

ELECTRICAL OUTLET

Refer to your pump owner's guide for detailed information pertaining to the requirements and regulations for safe electrical installation of the power supply, receptacle outlet, switching and ground fault interrupter.

WASTE LINE HOOK-UP

The discharge waste water will contain pool water treatment chemicals that may harm certain plants and vegetation. Therefore, position the discharge end of the waste line in a safe, out-of-sight area capable of accepting 100 to 150 gallons of waste water. Install a 1-1/2" inside diameter waste discharge hose (not supplied) on the waste port located on the valve. Slip a 1-1/2" hose clamp (not supplied) over one end of the hose. Then, push hose onto the port fully and tighten clamp firmly.

INSTALL FILTER SAND

Your filter is designed to provide peak performance using #20 grade filter (.4/.5 mm) sand. The sand should be uniform in size and appear as crushed sand with sharp edges. Rounded river bed sand will not filter properly. Consult your local pool store.

REMOVE COVER CLAMP

Unscrew V-Clamp knob completely then remove clamp.

REMOVE COVER

Lift cover off tank. Remove large O-Ring.

COVER DISTRIBUTOR

Slip a plastic bag over the distributor and secure with rubber band.

INSTALL SAND

Gently pour 100 lbs. of filter sand into tank and level surface with palm of hand. Remove any sand from plastic bag and tank flange sealing surface. Remove rubber band and plastic bag.

REINSTALL COVER

Position large O-Ring on tank flange sealing surface and place cover on top, aligning O-Ring into cover groove. Install V-Clamp, sandwiching cover and tank flanges. Tighten knob until ends of clamp are less than 3/8" apart.

FINISH FILLING POOL

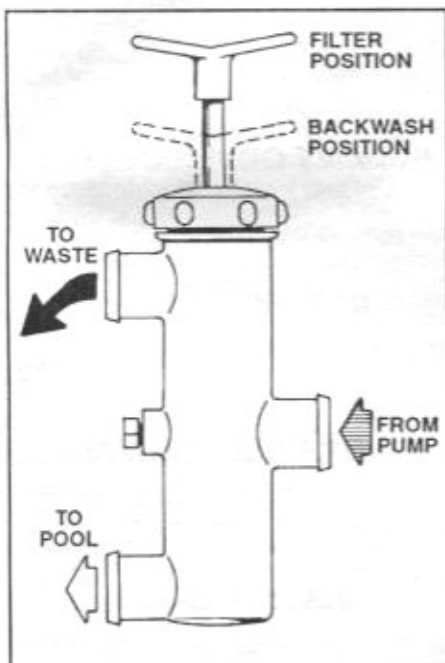
Finish filling your pool, referring to skimmer installation and pool assembly instructions for proper water level.

VALVE OPERATION

Your new filter has two positions of operation which are explained below. To change positions of the valve, make sure the pump is off.

FILTERING: Pull handle to the full up position for filtering or vacuuming pool.

BACKWASH: Push handle to the full down position for backwashing (cleaning) filter. Water is discharged to waste through the top valve port. Use for two minutes or until water runs clear.



INITIAL START UP

Before you begin filtering your pool, the filter sand must be backwashed thoroughly to remove the extra fine sand grains normally found in new filter sand.

1. Loosen the pump strainer pot lid to allow air to escape. Tighten lid when water begins to flow between strainer pot lid and strainer body. Do not over-tighten.
2. Plug in your pump to the GFCI protected receptacle. Refer to **WARNINGS**.
3. Push valve handle down against the valve cover in the **BACKWASH** position.
4. Start pump. During this initial start-up allow 4-5 minutes to flush out the super-fine sand grains to prevent them plugging the underdrain slots. Because pool water is lost during this operation (100 to 150 gallons) keep a close check on pool water level. Never let water level get so low that no water flows to pump. Refill pool as required.
5. Stop pump. Pull valve handle up into the full up position to the **FILTER** position and start pump. Note the pressure reading on your pressure gauge for future reference of when to backwash.
6. Check all fittings and hoses for leaks and correct if necessary.

FILTER OPERATION

A newly filled pool is normally filled with unfiltered water and usually requires continuous filtering for 24 to 48 hours along with chemical treatment of the pool water. Because all pool installations vary in environmental conditions (wind, rain, airborne debris, heat and pool use, etc.), it is impossible to provide an accurate filtering time for normal usage. Use a trial and error method to determine how long your filter must operate each day. Generally, 6 to 8 hours of filtering each day is sufficient to maintain pool clarity if the pool chemical treatment is correct.

As the water clears, less backwashing will be required. Consult your local pool store for helpful advice in keeping your pool clean and sanitary. When possible, avoid operating your filter during peak electricity demands in your community. Check with your local electric utility company for the best times they recommend for operating your filter pump.

WHEN TO BACKWASH

As your filter removes debris from the pool water during the filtering process, the return flow will gradually reduce. Backwash when the pressure gauge increases 5 to 7 pounds above the clean filter starting pressure. Normal backwash duration is 1-1/2 to 2 minutes or until water runs clear.

VACUUMING YOUR POOL

When vacuuming your pool, the filter must work harder. Consequently, all of that debris is caught in the filter at a very rapid rate. This causes a rapid increase in filter pressure as will be indicated on the pressure gauge. Frequent backwashing will be necessary during this process depending on the amount of sediment being vacuumed off the pool floor. Keep a check on the pool water level and refill as required.

MAINTENANCE

Preventative maintenance will provide continued smooth performance and extend the life of your filter for many years. Neglect will cause parts to wear or bind, leaks to occur and result in costly repairs. Keep moving parts lubricated and a clean environment around your filter and related components.

LUBRICATION

There are various types of lubricants available. However, most are intended for moving metal parts. Unfortunately, these lubricants will harm or degrade the plastics. **DO NOT** use petroleum base lubricants. Many people consider "PETROLEUM JELLY" safe for babies and can be applied to anything. But, it will **DESTROY** most plastics. Silicone lubricants are available at your pool dealer and are safe for use on plastics.

LUBE VALVE SHAFT

Periodically lubricate the valve shaft and internal O-Rings in your filter valve to maintain smooth operation.

1. Stuff a rag in the return fitting and into the bottom inside outlet of your skimmer to reduce water back-flow exiting the valve body when the piston assembly is removed.
2. Unscrew valve cover and pull piston assembly up and out of valve body.
3. Lightly lubricate the piston O-Rings and Valve Shaft with silicone lubricant.
4. Reinstall piston assembly and remove rags from skimmer and return fitting.
5. Actuate piston assembly up and down to distribute the lubricant, then resume normal operations.

REPAIRS

Service should be performed by a qualified dealer. If disassembly is attempted, mark each of the parts assembled position as it relates to its mating parts. This assures proper alignment when reassembled. Malfunction will occur if not properly assembled. See your dealer for original replacement parts.

CAUTION

BEFORE removing filter or pump from pool for servicing, prevent the backflow of water from your skimmer and return inlet from flowing out of disconnected hoses.

1. Remove skimmer cover and basket and plug inside bottom hole with rag.
2. Referring to the instructions for your return inlet, remove the inlet cover and eye ball. Insert the winterizing disc and reinstall the cover.
3. Disconnect hoses on filter or pump as necessary when removing for service or repairs.

DRAIN TANK

See Caution Above

1. Remove V-Clamp from filter and remove cover and O-Ring.
2. Remove tank drain cap to drain.
3. Place plastic bag over distributor in tank and secure with a rubber band. Scoop out sand with a medium size can and place in plastic bag.
4. After servicing, reassemble and install in reverse. Make sure tank O-Ring and sealing areas are free of any sand grains.

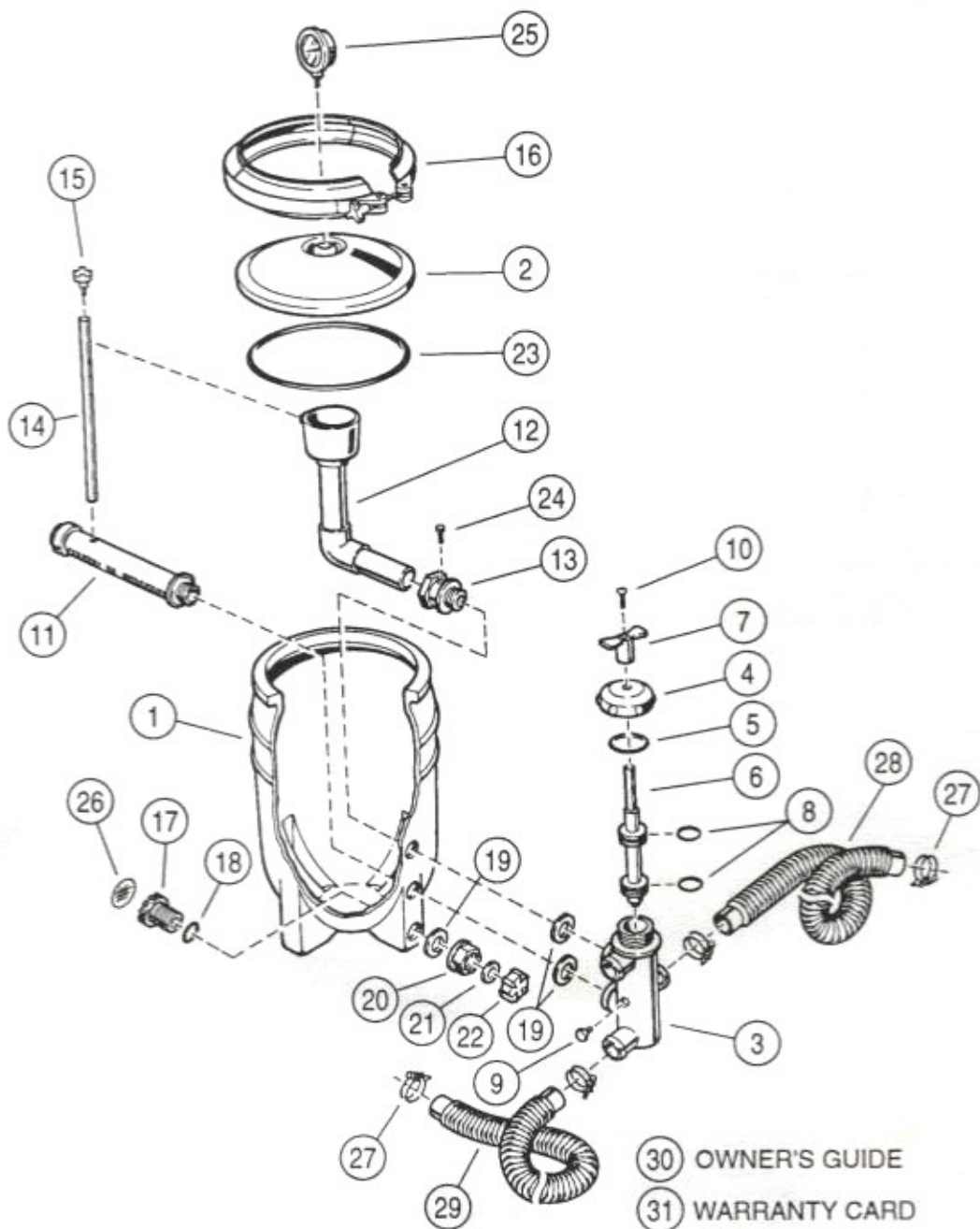
WINTERIZING FILTER

In areas subject to freezing damage, it is mandatory that the filter, pump and any related components be removed from the pool and stored indoors. (Refer to individual components owners guide such as pump, skimmer, chlorinator, etc., for specific winterizing instructions.)

1. Backwash the filter.
2. Syphon pool water level down below skimmer opening by using your vacuum hose and allow water to flow to an area that can accept a couple of thousand gallons or more.
3. Remove V-Clamp from filter and remove cover and O-Ring.
4. Remove tank drain cap and allow tank to drain fully.
5. Disconnect all hoses.
6. Place plastic bag over distributor in tank and secure with a rubber band. Scoop sand out with a medium size can and place in plastic bag. If sand is not badly contaminated, save for next season.
7. Store all components in a warm dry area indoors.

DAMAGE CAUSED BY FREEZING TEMPERATURES IS NOT COVERED BY PRODUCT WARRANTY.

Exploded View Spectra 3 Model 314 Lomart Sand Filter with 2 Position Valve



Parts List
Spectra 3 Model 314
Lomart Sand Filter with 2 Position Valve

ITEM	PART #	QTY	DESCRIPTION
1	1121-1483	1	Tank
2	340-1983	1	Tank Cover
3	1121-1484	1	Valve Body w/Decal
4	1107-1278	1	Valve Cap
5	308-1081	1	Valve Cap Gasket
6	340-1280	1	Valve Spool
7	340-1843	1	T-Handle
8	308-1006	2	Piston Rod O-Ring
9	340-1584	1	1/4" Pipe Plug
10	324-1018	1	1/4" x 1" Carriage Bolt
11	1107-1130	1	Lateral
12	1107-1464	1	Distributor Tube Assembly
13	340-1285	1	Valve Adaptor
14	341-1281	1	Air Relief Tube
15	343-1100	1	Air Relief
16	387-1030	1	V-Clamp
17	340-1982	1	Drain Fitting
18	308-1206	1	O-Ring
19	308-1109	3	Valve Port Gasket
20	340-1980	1	Drain Fitting Nut
21	307-1001	1	Drain Cap Gasket
22	340-2105	1	Drain Cap
23	308-1205	1	Tank O-Ring
24	330-1027	1	#8 x 1/2" Screw
25	395-1014	1	2" Pressure Gauge
26	340-1201	1	Sand Filter Drain
27	387-1003	6	Hose Clamp
28	346-1019	1	1-1/2" x4' Hose
29	346-1037	2	1-1/2" x 8' Hose
30	365-1713	1	Owner's Guide
31	368-1069	1	Warranty Card

TROUBLESHOOTING SAND FILTERS

PROBLEMS	POSSIBLE CAUSE	REMEDIES
1 - High gauge pressure, low return flow	<ol style="list-style-type: none"> 1 - Insufficient backwashing. 2 - Excessive contaminants or algae in sand. 3 - Filter sand is too fine. 4 - Underdrain plugged. 	<ol style="list-style-type: none"> 1 - Backwash filter. 2 - Backwash filter 3 - Use #20 filter sand. 4 - Replace sand.
2 - Low gauge pressure, low flow. Pump sucking in air. Pump sounds like marbles rattling in it.	<ol style="list-style-type: none"> 1 - Water level too low in pool. 2 - Restriction on suction side of pump. 3 - Skimmer or strainer basket filled with debris. 	<ol style="list-style-type: none"> 1 - Fill pool so water is between marks on skimmer face plate. 2 - Clear obstruction in skimmer, hoses or pump. 3 - Clean skimmer and strainer baskets.
3 - High flow, low or normal gauge pressure but pool water will not clear up.	<ol style="list-style-type: none"> 1 - Pool water is chemically out of balance. 2 - Sand too coarse. 3 - Sand grains rounded or worn. 	<ol style="list-style-type: none"> 1 - Check with test kit or contact dealer. 2 - Use #20 filter sand. 3 - Use crushed #20 filter sand.
4 - Short filter cycles.	<ol style="list-style-type: none"> 1 - Excessive contaminants or algae in sand or pool. 2 - Improper backwashing. 3 - Sand too fine. 	<ol style="list-style-type: none"> 1 - Check chemical balance. Filter will require frequent backwashing. 2 - Backwash filter thoroughly. Waste hose too long or restricted. 3 - Replace sand with #20 filter sand.
5 - Sand entering pool.	<ol style="list-style-type: none"> 1 - Defective underdrain. 2 - Sand too fine. 	<ol style="list-style-type: none"> 1 - Replace underdrain. 2 - Use #20 filter sand.
6 - Water leaking to waste.	<ol style="list-style-type: none"> 1 - Valve not seated in filter position. 2 - Defective gasket in valve body. 	<ol style="list-style-type: none"> 1 - Actuate valve handle and make sure valve is seated. 2 - Replace gasket or contact dealer. <p>Note: Contact your pool dealer for any problems you cannot solve.</p>

Change of Design: Lomart Industries expressly reserves the right to change or modify the design and construction of any product in due course of our manufacturing procedures, without incurring any obligation or liability to furnish or install such changes or modifications on products previously or subsequently sold.



Lomart

LOMART INDUSTRIES

10959 Jersey Blvd. • Rancho Cucamonga, CA 91730