

*Lomart*

# DYNAFLOW 1

Swimming Pool Pump

Models 1-5710-102, 1-5710-103, 1-5710-104

---

---

## Owner's Guide

---

---



## IMPORTANT SAFETY INSTRUCTIONS

When installing and using this electrical equipment, basic safety precautions should always be followed, including the following:

READ AND FOLLOW ALL INSTRUCTIONS

### WARNINGS

1. **To reduce the risk of injury**, do not permit children to use this product unless they are closely supervised at all times.
2. Do not bury cord. Locate cord to minimize abuse from lawn mowers, hedge trimmers, and other equipment.
3. **Risk of electric shock.** Connect only to a grounding type receptacle protected by a Ground Fault Circuit Interrupter (GFCI). Contact a qualified electrician if you cannot verify that the receptacle is protected by a GFCI.
4. **To reduce the risk of electric shock**, replace damaged cord immediately.
5. **To reduce the risk of electric shock**, do not use an extension cord to connect unit to electric supply; provide a properly located outlet. For runs greater than 6 feet, consult your local licensed electrical contractor.
6. **To reduce the risk of electric shock**, make sure you and your clothing are dry before touching your filter or pump. Make sure the ground under your feet is dry.
7. **To reduce the risk of electric shock**, do not install your pump or filter on a deck. They could fall into the water causing severe electric shock or electrocution. Do not install on any surface at, above, or slightly below the top rail or water line of the pool.
8. Do not allow children or adults to climb sit or stand on your pump or filter. They could easily fall and injure themselves. Install the filter and pump a minimum of 4 feet from the pool wall so they may not be used as steps by children.

### CAUTIONS

1. Do not install pump and filter system where flooding may occur. This could damage the pump motor.

2. Make sure the pump is disconnected from electrical source before servicing pump and filter equipment.
3. Never run the pump without water. Water acts as a coolant and lubricant for the pump seal. If the pump is run dry, the seal will be damaged.
4. SAVE THESE INSTRUCTIONS.

### LOCAL CODES

Contact your local building department for applicable codes or regulations governing the installation of swimming pool equipment.

### CONTRACTED ELECTRICIANS

Always have a licensed electrician install electrical components to make sure electrical integrity is maintained in accordance with the pump data label. Improper installation to the power supply may damage the pump motor.

### ELECTRICAL FEATURES

Your pump is supplied with a 6-foot, 3-wire electrical cord and 3-pronged plug. The pump electrical cord must be connected to a grounded, 3-wire, 115 VAC electrical receptacle. The receptacle must be protected by a Ground Fault Circuit Interrupter (GFCI)

An ON/OFF switch must be installed at the receptacle.

### IMPORTANT INSTRUCTIONS

If you have purchased a Lomart filtration system, follow the instructions provided with your Lomart Filter instructing you to prepare the filter and pump foundation using patio blocks and a level.

### PUMP ASSEMBLY

Position the pump near the filter to allow for convenient routing of the filter and pump hoses.

### INITIAL START-UP

1. If you have a Lomart filtration system, follow the "Initial Start-Up" instructions in the Lomart Filter owner's guide.

2. The pump will have to be primed after all hose connections have been made and the pool has been filled to the proper level. To prime the pump, fill the hoses and pump chamber with water from a garden hose. Be sure to tighten all hose connections before starting the pump motor.
3. Turn on the pump motor.
4. Allow a reasonable amount of time (a few minutes) for the system to be completely purged of air.

### MAINTENANCE & WINTERIZING

**Make sure the pump is disconnected from the electrical source before attempting any maintenance work.**

Drain all water from the pump system and store indoors during the winter months.

#### LUBRICATION:

Follow the motor manufacturers directions for lubricating the motor.

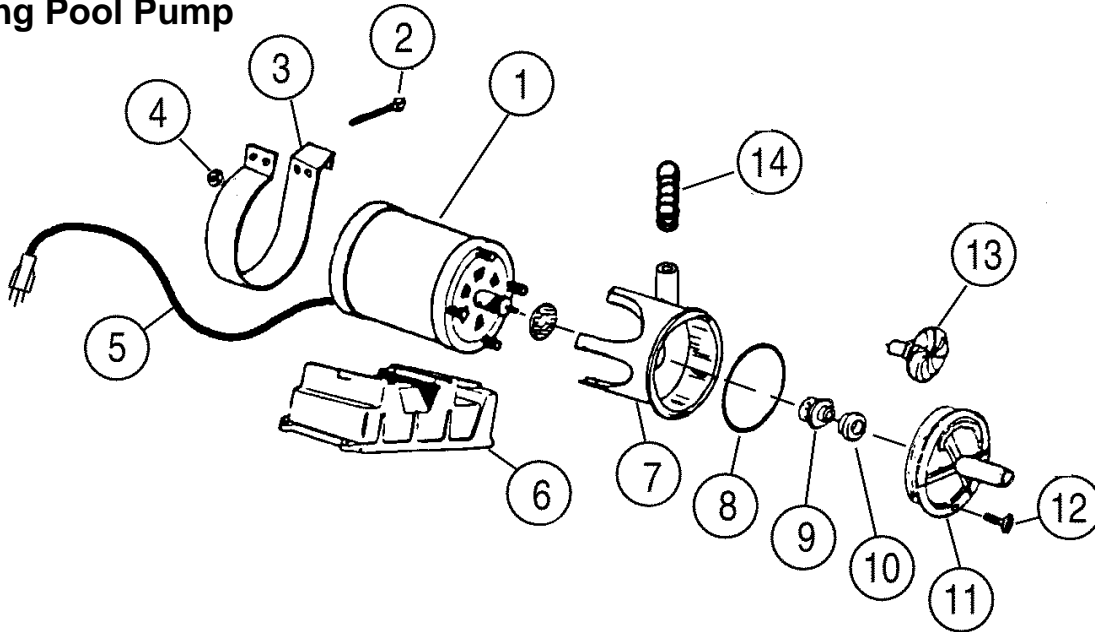
If you have questions or require assistance, contact your Lomart pool dealer.

# TROUBLE SHOOTING CHECKLIST FOR LOMART PUMP & MOTOR

**NOTE: ALWAYS BE SURE PUMP IS DISCONNECTED FROM ELECTRICAL SOURCE BEFORE ATTEMPTING ANY MAINTENANCE OR REPAIR WORK.**

<b>PROBLEMS:</b>	<b>POSSIBLE CAUSE:</b>	<b>REMEDIES:</b>
1. Motor will not start.	<ol style="list-style-type: none"> <li>1. Pump not plugged in.</li> <li>2. Faulty electrical outlet.</li> <li>3. Low voltage.</li> </ol>	<ol style="list-style-type: none"> <li>1. Make sure pump is plugged into a grounded, 3-wire, 115 V. electrical receptacle that is not overloaded with other appliances.</li> <li>2. Check for improper or loose connections, open switches or relays, blown circuit breaker or fuses.</li> <li>3. The use of an electrical extension cord may cause a low power source. Have a qualified electrician install a Ground Fault Circuit Interrupter (GFCI) for direct electrical access.</li> </ol>
2. Pump will not prime.	<ol style="list-style-type: none"> <li>1. Air in pump.</li> <li>2. Clogged inlet and/or outlet connections.</li> </ol>	<ol style="list-style-type: none"> <li>1. Make sure pool is filled to proper level. Make sure pump, and hoses leading to and from pump are filled with water. Keep hose connections tight to prevent water and/or air leaks.</li> <li>2. Clean out skimmer basket and hoses if necessary.</li> </ol>
3. Motor will stop without being turned off, then restart later.	<ol style="list-style-type: none"> <li>1. A too long or too light extension cord.</li> <li>2. Blocked air vents on bottom of pump housing causing motor to overheat.</li> <li>3. There may be a bind in motor causing overload.</li> <li>4. Thermal protector in motor is faulty.</li> </ol>	<ol style="list-style-type: none"> <li>1. Have a qualified electrician install a Ground Fault Circuit Interrupter (GFCI) for direct electrical access, or use a heavier gauge extension cord.</li> <li>2. Properly elevate pump 2 to 3 inches above foundation according to instructions.</li> <li>3. Locate bind and remove cause.</li> <li>4. Replace motor.</li> </ol>
4. High pressure gauge reading with low return flow.	<ol style="list-style-type: none"> <li>1. Filter is dirty.</li> <li>2. Plugged or restricted return line.</li> </ol>	<ol style="list-style-type: none"> <li>1. Backwash Filter.</li> <li>2. Plug skimmer and return fitting, then clear debris from return line.</li> </ol>
5. Low pressure gauge reading with low return flow.	<ol style="list-style-type: none"> <li>1. Plugged or restricted impeller.</li> <li>2. Clogged skimmer basket and/or plugged suction line leading to pump.</li> </ol>	<ol style="list-style-type: none"> <li>1. Plug skimmer and return fitting, then disassemble pump and clean impeller.</li> <li>2. Plug skimmer and return fitting, then clear debris from suction line.</li> </ol>
6. Leak from front of pump.	<ol style="list-style-type: none"> <li>1. Defective pump O-ring.</li> <li>2. Worn pump seal set.</li> </ol>	<ol style="list-style-type: none"> <li>1. Replace pump O-ring.</li> <li>2. Replace pump seal set.</li> </ol>

**EXPLODED VIEW**  
**Dynaflow 1**  
**Swimming Pool Pump**



DYNAFLOW 1 - PUMP & MOTOR PARTS LIST					
MODEL NUMBERS 1-5710-102, 1-5710-103, 1-5710-104					
ITEM	P/N	QTY	DESCRIPTION	MODEL	
1	300-1026	1	1/2 HP Motor	1-5710-102	
	300-1027	1	3/4 HP Motor	1-5710-103	
	300-1028	1	1HP Motor	1-5710-104	
2	324-1018	1	1/4-20 x 1" Bolt	All	
3	385-1196	1	Motor Strap w/Sleeve	All	
4	321-1004	1	1/4-20 Hex Nut	All	
5	1100-1636	1	6 Ft. Power Cord	All	
6	340-2188	1	Motor/Pump Base	All	
7	1107-1626	1	Pump Housing Assembly	All	
8	308-1125	1	O-ring - 4.725 I.D. x .210 Dia.	All	
9	306-1002	1	Ceramic Seal	All	
10	306-1006	1	Shaft Seal	All	
11	340-2190	1	Pump Cover	All	
12	330-1027	1	#8 x 1/2 Hex Screw	All	
13	1107-1387	1	Impeller-1/2 HP	1-5710-102	
	1107-1388	1	Impeller-3/4 & 1 HP	1-5710-103, 1-5710-104	
14	348-1038	2	Hose Adaptor	All	
15	327-1026	1	#8 External Tooth Lockwasher (Not Shown)	All	
16	365-1755	1	Owners Guide	All	
17	---	1	Warranty	All	

Change of Design: Lomart Industries expressly reserves the right to change or modify the design and construction of any product in due course of our manufacturing procedures, without incurring any obligation or liability to furnish or install such changes or modifications on products previously or subsequently sold.



**LOMART INDUSTRIES**

**10959 Jersey Blvd. • Rancho Cucamonga, CA 91730**

Made in the United States of America