

"the original portable pool"

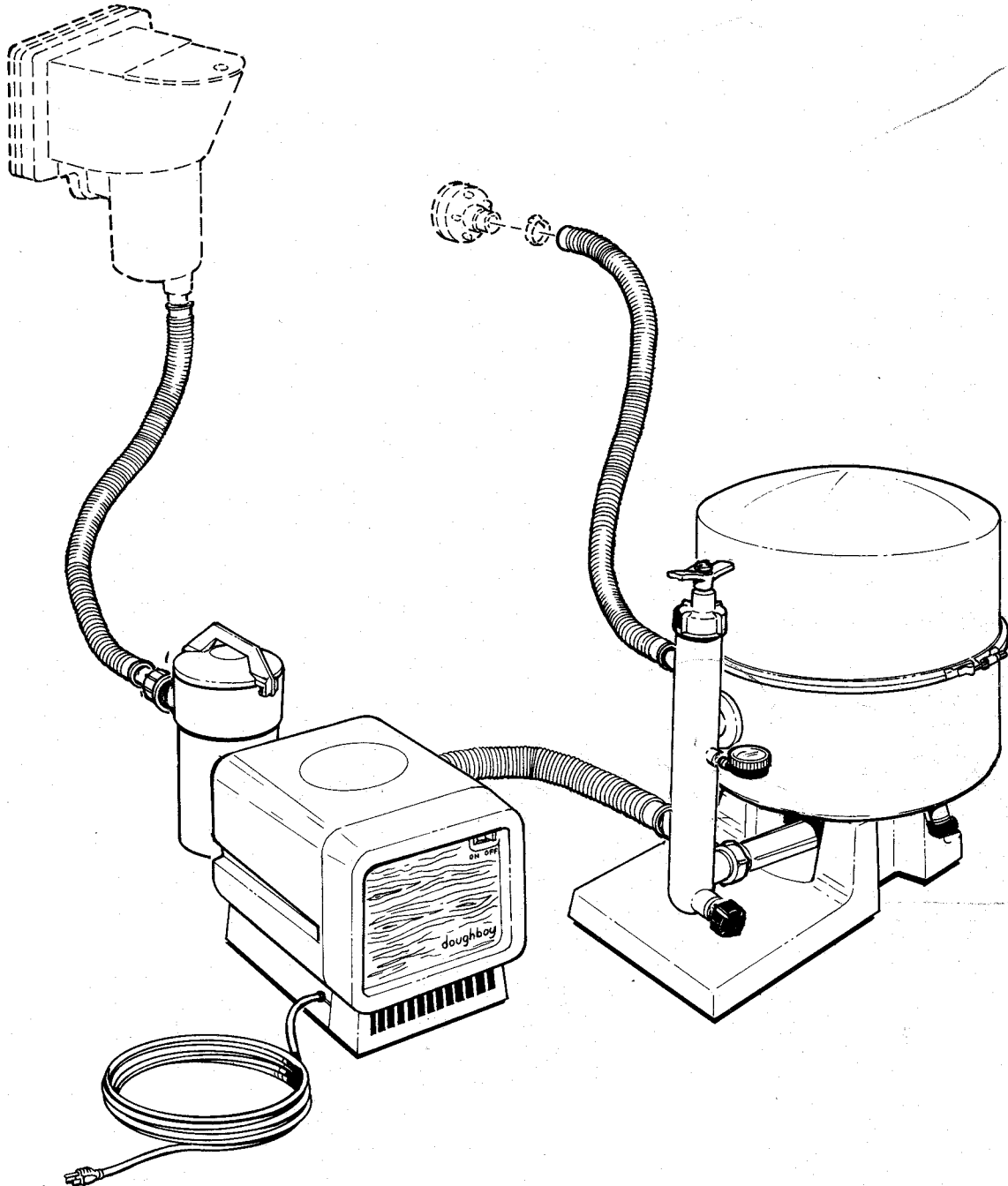
doughboy

OWNERS MANUAL

ASSEMBLY • OPERATION • PARTS • SERVICE

SAND FILTER

MODELS 1524 NB • 1545NB



IMPORTANT:
READ ALL INSTRUCTIONS CAREFULLY
BEFORE STARTING THE INSTALLATION.

SAVE THIS MANUAL FOR
FUTURE REFERENCE.

"the original portable pool"

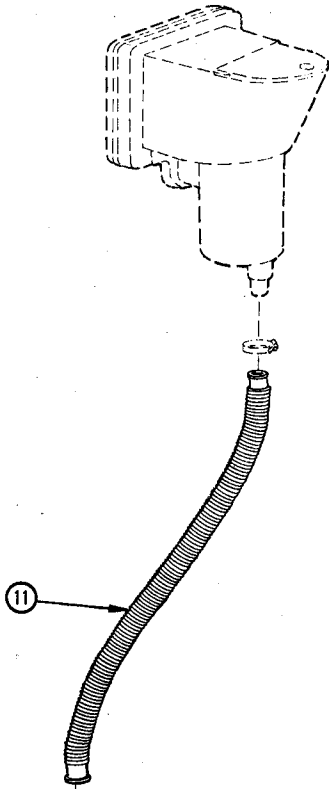
doughboy

Recreational, Inc. 10959 Jersey Boulevard, Rancho Cucamonga, Ca 91730

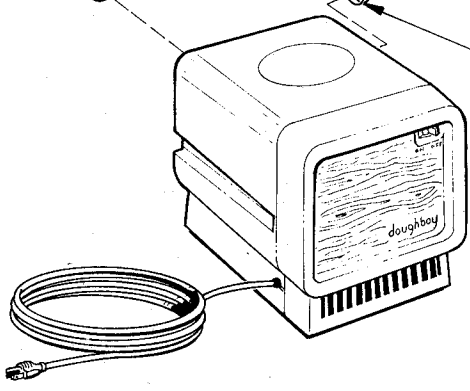
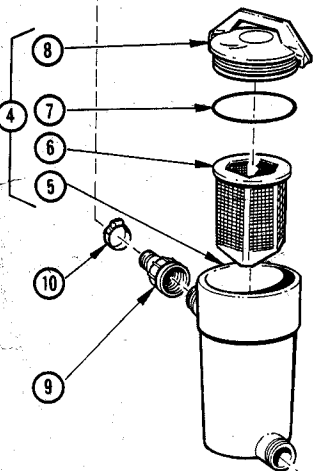
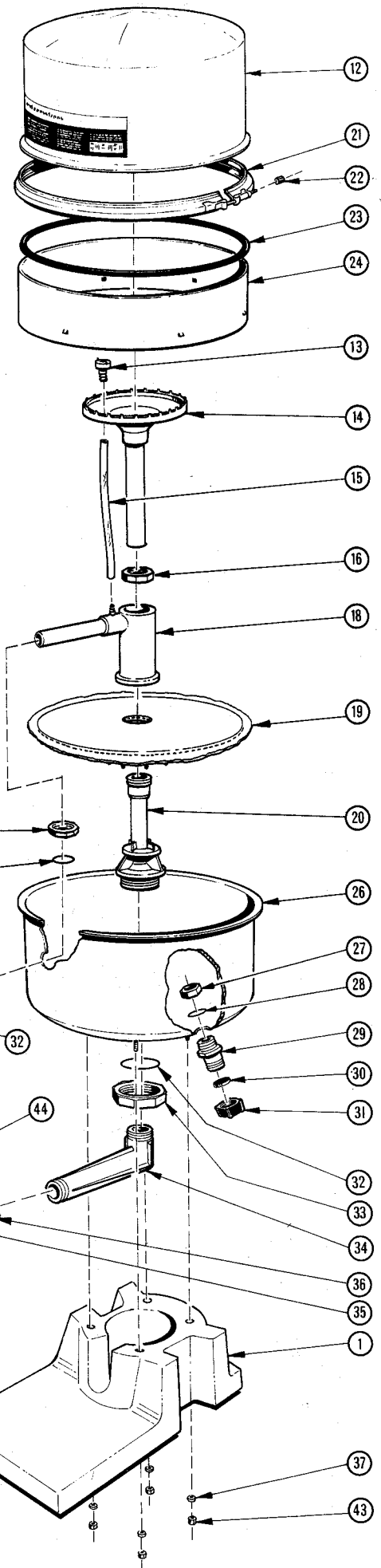
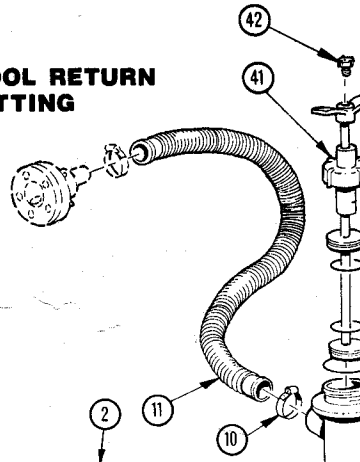
EXPLODED PARTS

MODELS 1524 NB • 1545 NB

SKIMMER



POOL RETURN FITTING



POOL POWER-PAK®

1524 NB

1545NB

PARTS LIST			
Item	Part No.	Qty	Description
1	340-1129	1	Base
2	346-1010	1	Pump Discharge Hose
3	387-1003	2	Wire Hose Clamp
4	1121-1012	1	Complete Hair & Lint Pot Assembly
5	340-1031	1	Body, Hair and Lint Pot
6	1119-1000	1	Basket for Hair & Lint Pot
7	308-1004	247	Hair & Lint Pot O-Ring
8	340-1105	1	Lid, Hair & Lint Pot
9	340-1079	1	Female Hose Adapter
10	387-1002	2	Hose Clamp
11	346-1004	2	Hose
12	1105-1035	1	Lid Half Assembly for Model # 1524-NB
	1105-1036	1	Lid Half Assembly for Model # 1545-NB
13	1116-1020	1	Automatic Air Relief
14	1116-1010	1	Over Drain Diverter Assembly for Model # 1524-NB
	1116-1011	1	Over Drain Diverter Assembly for Model # 1545-NB
15	341-1013	1	Air Relief Tube for Model # 1524-NB
	341-1018	1	Air Relief Tube for Model # 1545-NB
16	1119-1029	2	Retainer Nut
17	308-1016	224	O-Ring
18	1116-1009	1	Effluent Manifold Assembly
19	1111-1007	1	Under Drain Grid Assembly

PARTS LIST			
Item	Part No.	Qty	Description
20	340-1019	1	Influent Manifold
21	387-1001	1	V-Clamp
22	321-1000	1	V-Clamp Nut
23	308-1000	1	Tank O-Ring
24	385-1001	1	O-Ring Retainer for Model # 1524-NB
	385-1022	1	O-Ring Retainer for Model # 1545-NB
26	1105-1037	1	Tank Half Assembly
27	1119-1030	1	Retainer Nut
28	308-1002	246	O-Ring
29	340-1009	1	Tank Drain
30	307-1001	2	Drain Cap Gasket
31	340-1035	2	Drain Cap
32	308-1008	229	O-Ring
33	1119-1028	1	Retainer Nut
34	340-1024	1	Riser, Male
35	307-1000	1	Riser Gasket
36	340-1026	1	Slip Nut
37	330-1013	4	Washer
39	340-1140	1	Backwash Valve Body
40	308-1006	326	Piston O-Ring
41	1116-1016	1	Piston Rod & Cap Assembly
42	340-1020	1	Air Induction Valve
43	330-1011	4	NUTS 1/4-20
44	395-1000	1	Pressure Gauge

NOTE: Two clamps (Item 10) supplied with this filter. Two additional hose clamps supplied with skimmer.

PREPARATION

Install the filter after the pool has been properly assembled complete with thru-the-wall skimmer and return fitting. The filter and the Pool Power Pak® should be placed on a firm, level support such as patio blocks. Locate support area between the skimmer and return fitting.

IMPORTANT

The filter system requires a **grounded**, 3 wire, 110V electrical receptacle **protected** by a Ground Fault Circuit Interrupter.

Be sure that the receptacle is not overloaded with other appliances. The Pool Power Pak® is supplied with a 25 ft., 3 wire cord. **Do not** use grounding adapters. If an extension cord is used, it **must** be no longer than 25 ft., three conductor, grounded, outdoor type and 14 gauge **minimum**. For runs greater than 50 feet, consult your local electrical contractor for safest method of installation. The use of inadequate extension cords will **void** all warranties given by the motor manufacturer.

ASSEMBLY (Fig. 1)

- Place tank assembly on tank base (1) so that the protruding studs enter the slots on the curved cradle. Secure to base with two washers (37) and nuts (43).
- Thread "Hair and Lint" pot (4) into pump face on the Pool Power Pak®. Exercise care to prevent cross-threading and overtightening. The pot should be snug and left in an upright position. Thread hose adapter (9) onto other end of pot.
- Screw pressure gauge (44) into threaded boss on side of backwash valve (39).
- Connect short black hose (2) between pump and backwash valve. Secure each end with a wire hose clamp (3).
- Connect a long white hose (11) between the hose adapter (9) on the front of hair and lint pot and the bottom of the thru-the-wall skimmer. Secure each end with a hose clamp (10).
- Connect the other long white hose (11) between the top port on the backwash valve (39) and the pool return fitting. Secure each end with a hose clamp (10).

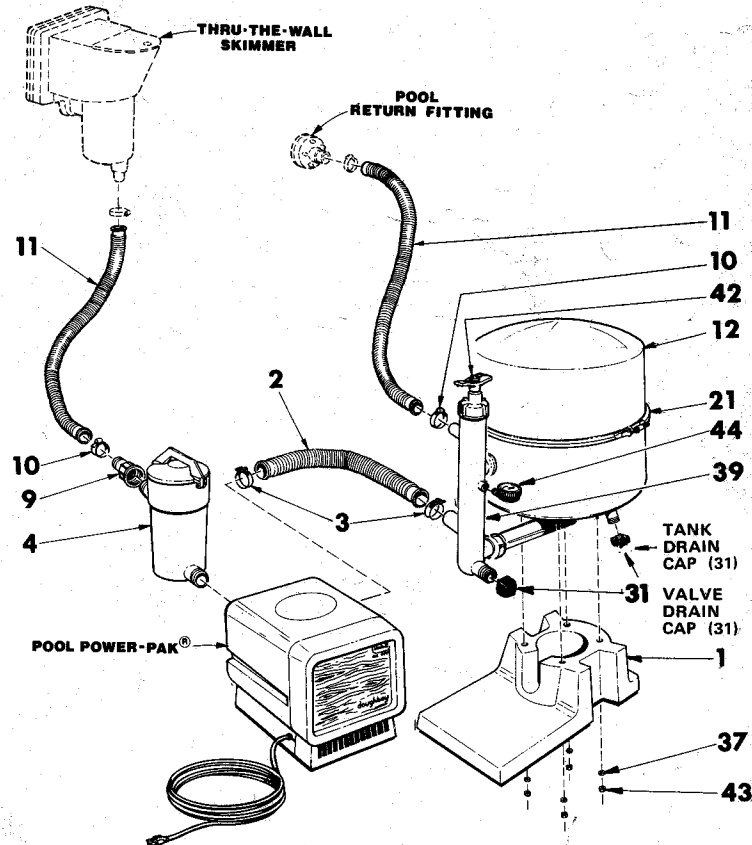


FIG. 1

OPERATION VALVE OPERATING INSTRUCTIONS

This filter is equipped with a three position valve with a positioning feature. This feature keeps the handle from moving upward while the filter is operating. **Never** operate valve when pump is running. **Always** remove valve drain cap (31) before changing positions.

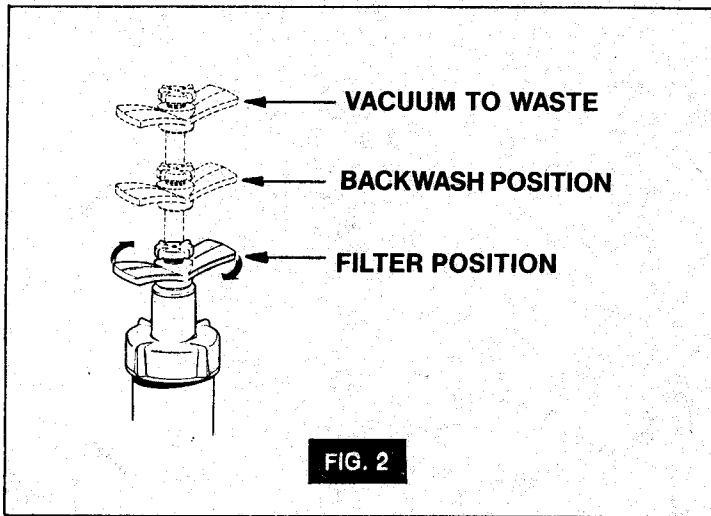


FIG. 2

FILTER POSITION—The valve handle is in the full down position. Turn the handle slightly to set the position so it cannot move upward.

BACKWASH POSITION—Turn the handle while exerting a slight upward pull. The handle will find a guideway and slide upward to a stop position. Turn the handle slightly to set in position.

VACUUM TO WASTE—From the backwash position, turn the handle with an upward pull. The handle will slide upward and stop. Again turn handle to set in position.

The handle is returned to the filter and backwash positions by turning handle with a slight downward pressure. The first stop will be the backwash position. If the handle is turned and downward pressure used again, the handle will return to the filter position. Turn handle slightly to set in position.

FILLING WITH SAND

1. Remove "V" clamp (21) and top half of tank (12). Fill tank half full of water to protect underdrain assembly.
2. Fill lower tank with "No. 20 grade crystal silica sand" with an effective grain size of between 0.35 and 0.45 mm. and having a uniformity coefficient of no greater than 1.60. Important—Do not use any other type or size of sand.

Filter Model	No. 20 Grade Silica Sand
1524-NB	80 lbs.
1545-NB	100 lbs.

TABLE 1

These are approximate weights—sand should fill tank to top of O-ring retainer.

3. After filling with sand—wash any excess sand from the tank O-ring and tank flange. Replace tank half, "V" clamp and tighten securely.
4. Fill pool to proper water level. Check all fittings for leaks.
5. Remove valve drain cap (31). Slide a vacuum hose or drain hose over drain port and direct to disposal point.
6. Raise valve to backwash position (refer to valve operating instruction). Connect Pool Power Pak® to grounded receptacle.
7. Start pump. Let filter run in backwash for 6 to 10 minutes whenever new sand has been added to the filter. This removes any extra fine sand and dirt from the filter.
8. Turn off pump. Return valve to filter position. Remove vacuum hose from drain port and replace valve drain cap (31).
9. Turn on pump. Air is automatically released from the tank through the pool return fitting. The filter is now ready for normal pool cleaning.

CLEANING FILTER (Backwashing)

The filter requires cleaning when the pressure gauge reading is in the red service zone (17½ psi).

1. Turn off pump. Remove, clean and replace basket from skimmer.
2. Remove valve drain cap (31) from drain port. Slide a 1¼" vacuum hose or drain hose over drain port and direct to disposal point. Raise valve handle to backwash position (refer to valve operating instructions).
3. Turn on pump. Allow the filter to run in backwash for approximately 1 to 2 minutes or until the water coming from the drain hose is clean.
4. Turn off pump. Return valve handle to filter position. Remove vacuum hose from drain port and replace valve drain cap (31).
5. Turn on pump. Air is automatically released from the tank through the pool return fitting. The filter is now ready for normal pool cleaning.

VACUUM TO WASTE

This feature can be used for vacuuming an extremely dirty pool. The dirty pool water will bypass the filter and go directly to waste.

1. Turn off pump. Remove valve drain cap (31). Slide a vacuum hose or drain hose over port and direct to disposal point.
2. Raise valve handle to highest position (see valve operating instructions) and set in position.
3. Connect vacuum cleaner set to skimmer. Start pump. The water is now bypassing the filter and going directly to waste.

SERVICING

DRAINING FILTER

1. Turn off pump. Block off both the return fitting and skimmer by placing a rag or cloth in the bottom hole under the skimmer basket and in the return fitting ball.
2. Place valve handle in backwash position. Remove tank drain cap (31). Open air induction valve (42) on top of valve.

WINTERIZING

Before the first winter freeze, drain and remove the Pool Power Pak® and filter. Store in warm dry area.

MAINTENANCE

Periodically lubricate the O-rings on the "Hair and Lint" pot and inside the backwash valve with a non-petroleum lubricant recommended for plastic. Consult your local pool dealer. See Pool Power Pak® instructions for motor lubrication.